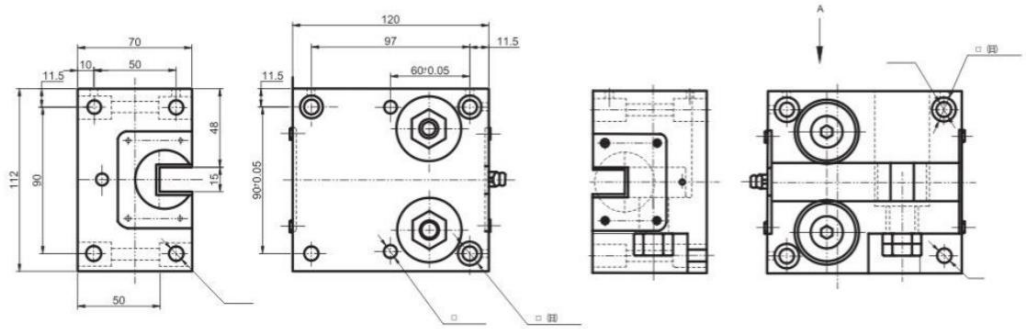
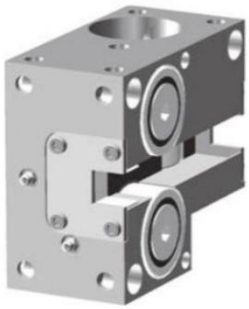
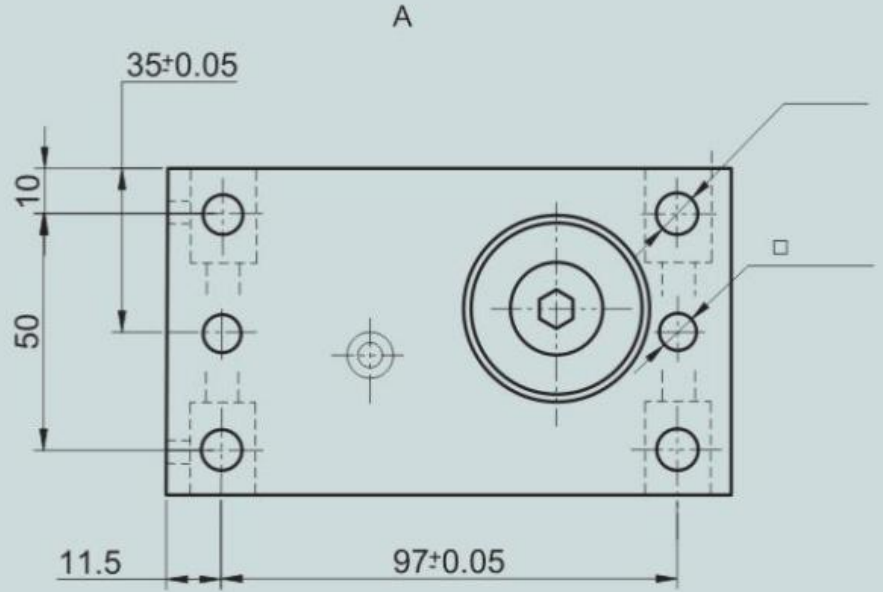


1. 40 type roller combination:

40型滚轮支座 (右侧支座) Roller support (right hand version)

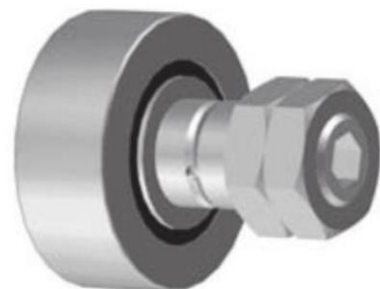
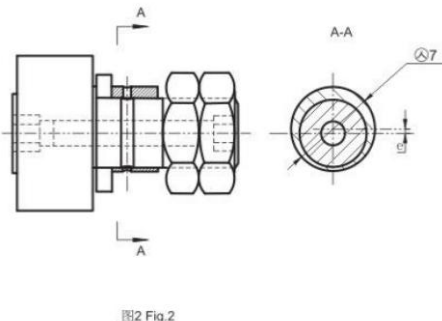
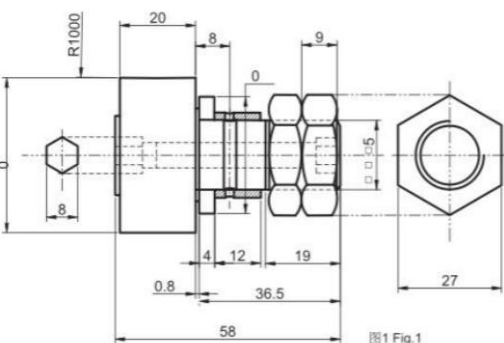


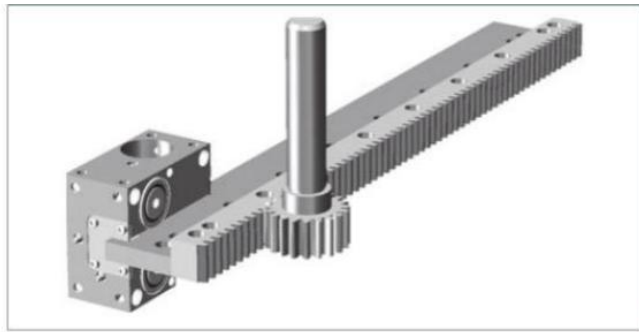
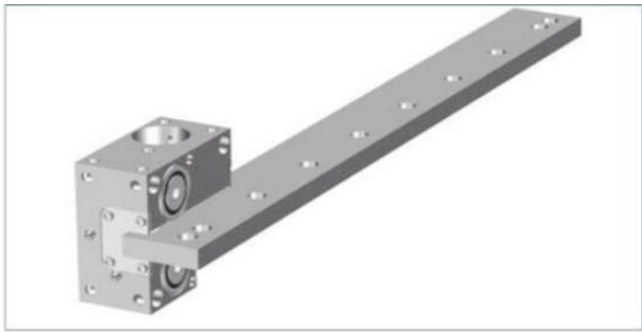
型号 Code	①	②	③	重量 M (kg)	C_{0W} (N)	$C_W^{①}$ (N)	$C_W^{②}$ (N)	N_{max} (min^{-1})
VGL40.1R	GBR	GBR	GBR	2.5	13800	7000	1800	5000
VGL40.2R	GBR	GBR	GBR	2.5	13800	7000	1800	5000
VGL40.3R	GBR	GBR	GBR	2.5	13800	7000	1800	5000

$C_W^{①}$: Normal service life 10^6 m $C_W^{②}$: Normal service life 10^8 m

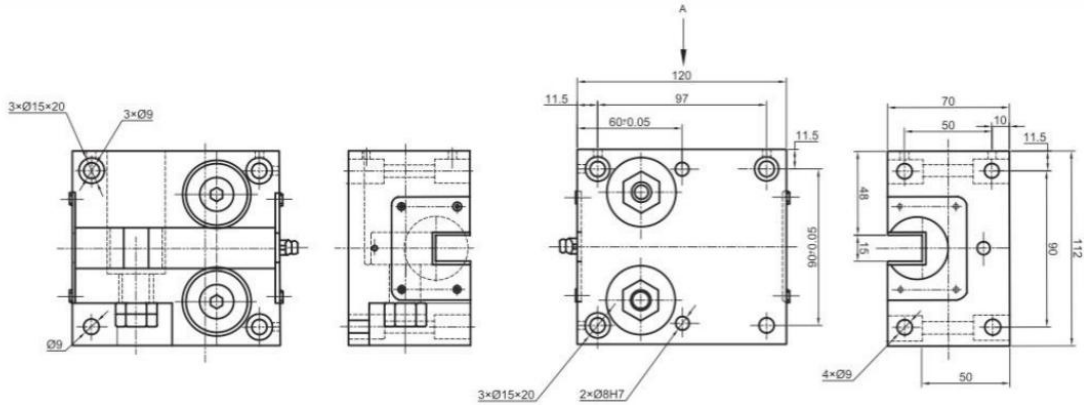
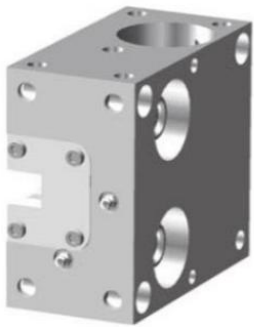
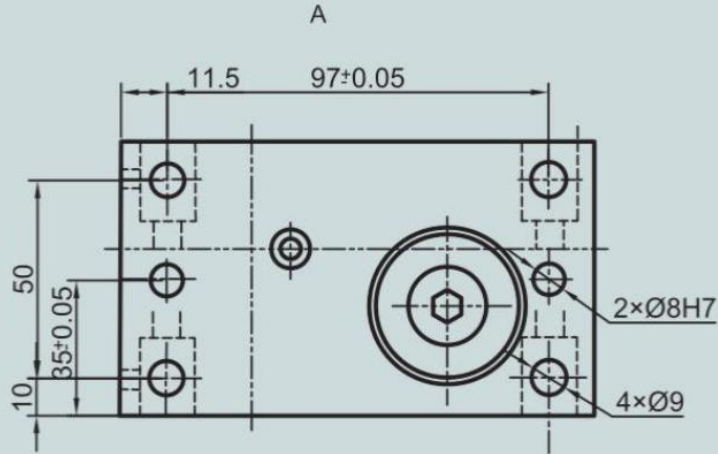
Stud roller

型号 Code	圆 Fig	偏心量 Excenter (mm)	重量 Weight (kg)	螺母拧紧力矩 MA (Nm)
SVL40	1	-	0.25	87
SVL40	2	1	0.25	87





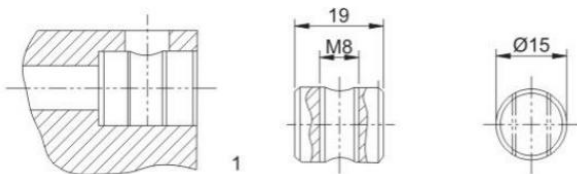
40型滚轮支座 (左侧支座)
Roller support (left hand version)



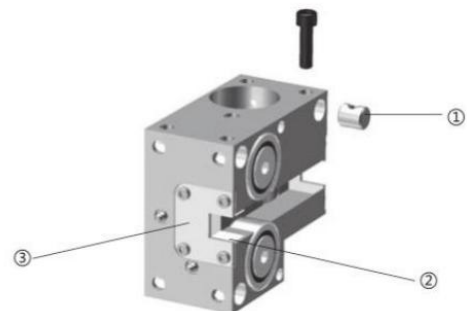
型号 Code	①	②	③	重量 M (kg)	C_{0W} (N)	$C_W^{①}$ (N)	$C_W^{②}$ (N)	N_{max} (min^{-1})
VGL40.1L	GBR	GBR	GBR	2.5	13800	7000	1800	5000
VGL40.2L	GBR	GBR	GBR	2.5	13800	7000	1800	5000
VGL40.3L	GBR	GBR	GBR	2.5	13800	7000	1800	5000

$CW^{①}$: Normal service life 10^6 m $CW^{②}$: Normal service life 10^8 m

Accessories

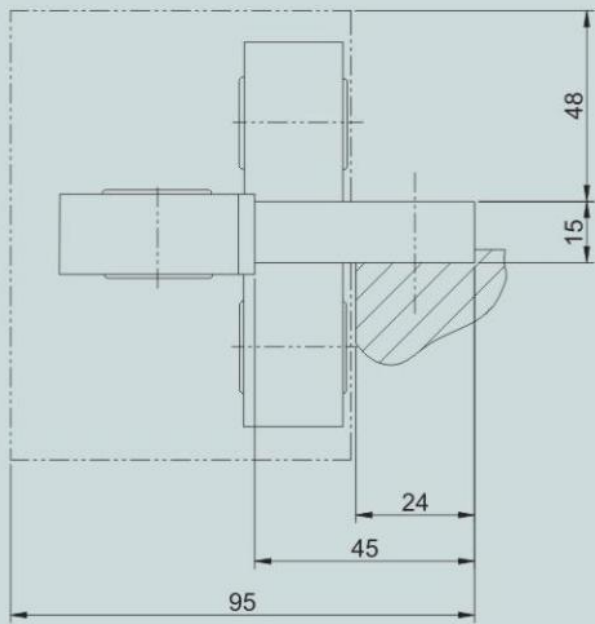


圆 Fig	材料 Material	重量 Weight (kg)
①	C45	0.01
②	毛毡	
③	Q345B	

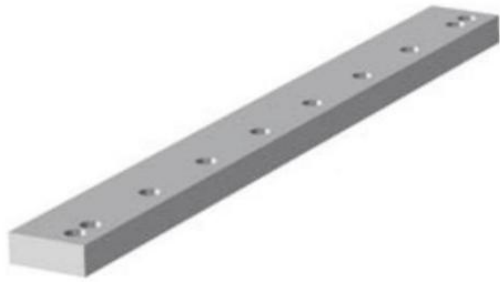


40型扁导轨安装图

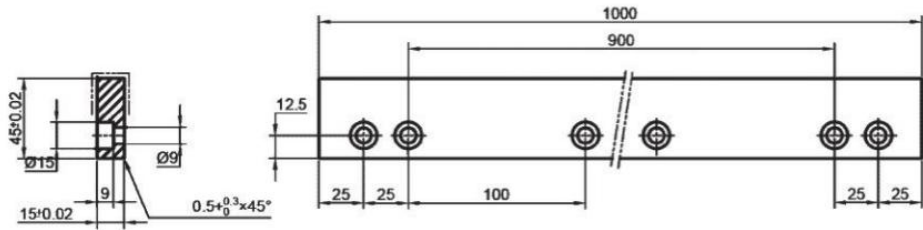
40 guideway flat rail mounting dimensions



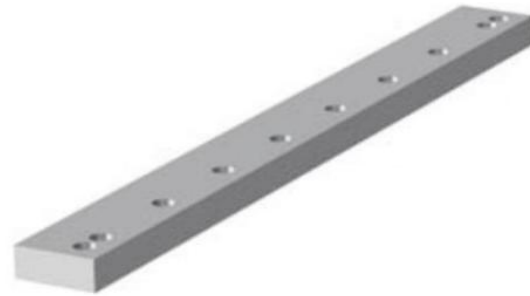
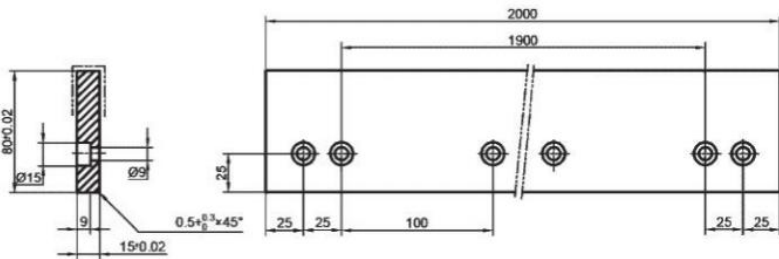
40 Guideway flat rail



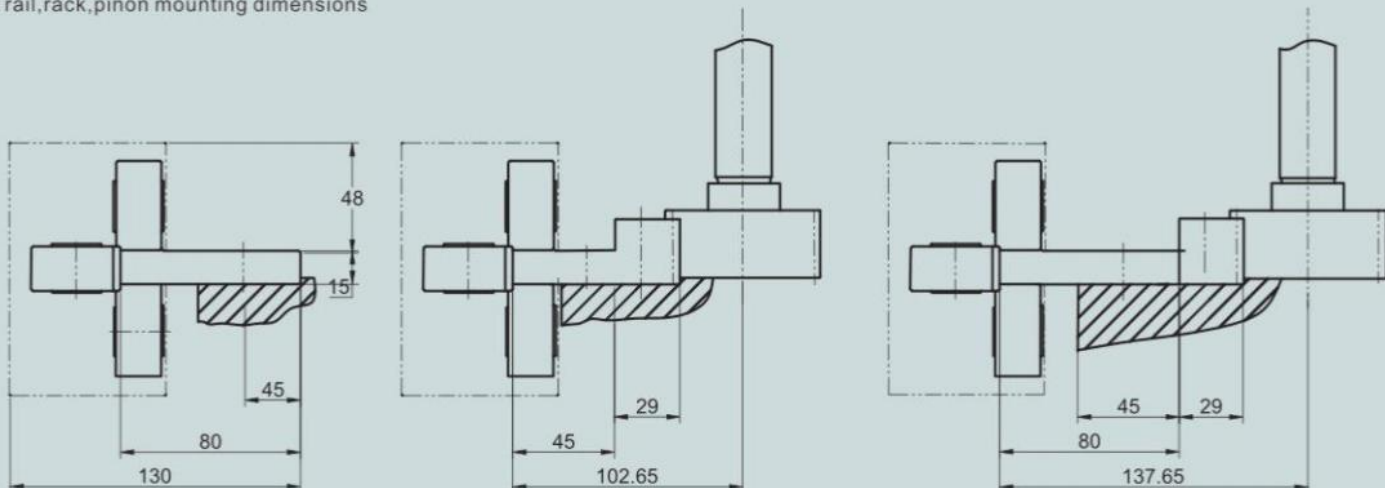
型号 Code	L	L1	材料 Material	螺栓型号 Bolt size
VGD40101	1000	900	SCM440	M8×20 8.8 級



型号 Code	L	L1	材料 Material	螺栓型号 Bolt size
VGD40202	2000	1900	SCM440	M8×20 8.8 級



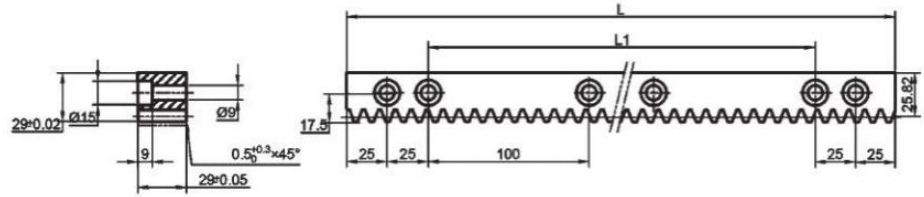
40 guideway flat rail, rack, pinon mounting dimensions





Drive pinion

型号 Code	L	L1	模数 Module	齿距P (mm)	材料 Material	精度等级 Precision grade	螺栓型号 Bolt size
VGE40110	1200	1100	3.1831	10.0	SCM440	DIN9	M8×35 8.8级
VGE40210	2000	1900	3.1831	10.0	SCM440	DIN9	M8×35 8.8级



型号 Code	齿数 Z	模数 Module	齿距 P	圆 Fig.	精度等级 Precision grade	重量 Weight KG
CLGR40-PE10	20	3.1831	10.0	1	DIN6	1.95
CLCR40-PE10	20	3.1831	10.0	2	DIN6	0.9

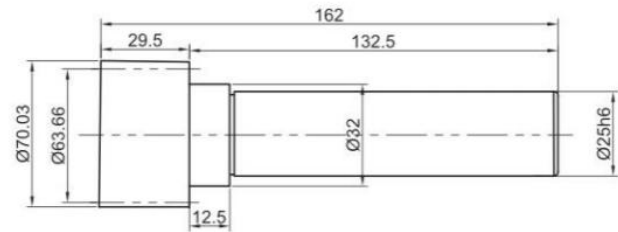


图1 Fig.1

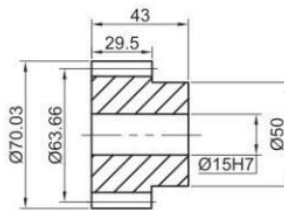
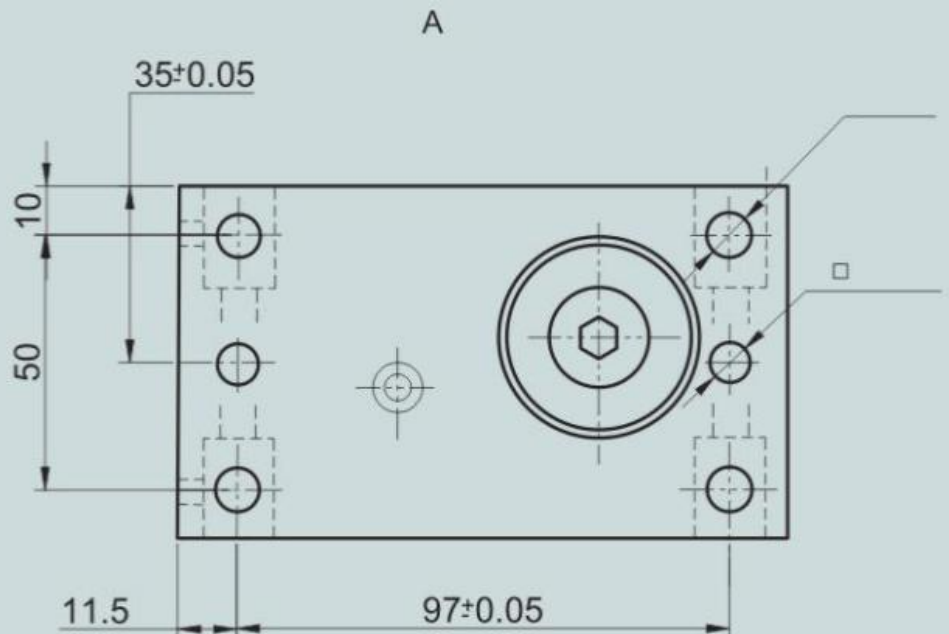
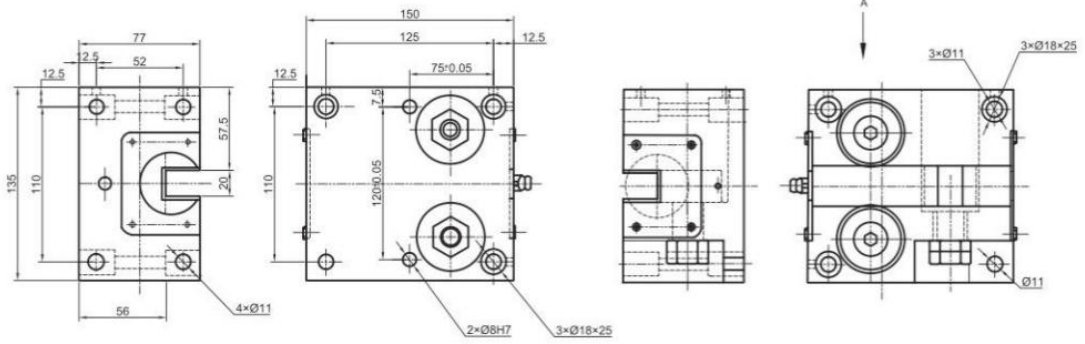
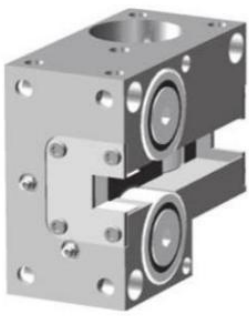


图2 Fig.2

2. 52 type roller combination:

52型滚轮支座 (右侧支座) Roller support (right hand version)





型号 Code	①	②	③	重量 M (kg)	C _{0W} (N)	C _W ^① (N)	C _W ^② (N)	Nmax (min ⁻¹)
VGL52.1R	GBR	GBR	GBR	4	28000	14000	3500	3800
VGL52.2R	GBR	GBR	GBR	4	28000	14000	3500	3800
VGL52.3R	GBR	GBR	GBR	4	28000	14000	3500	3800

CW^① : Normal service life 10⁶m CW^② : Normal service life 10⁸m

Stud roller

型号 Code	圆 Fig	偏心量 Excenter (mm)	重量 Weight (kg)	螺母拧紧力距 MA (Nm)
SVL52	1	-	0.47	120
SVL52	2	1	0.47	120

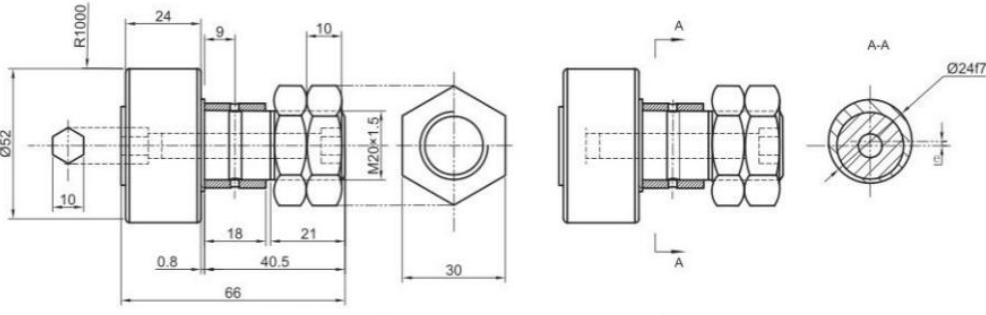
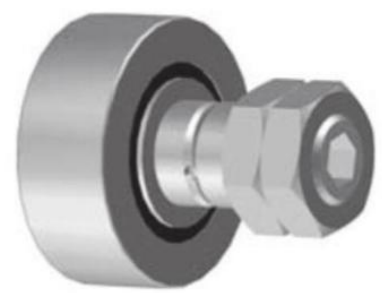
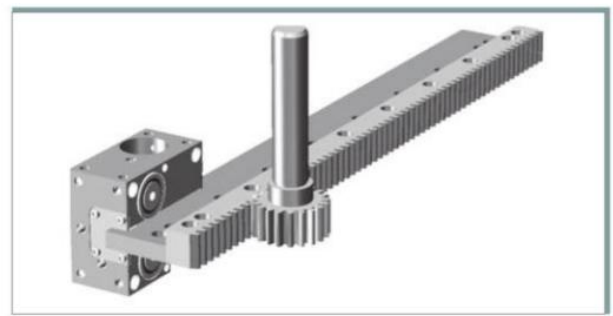
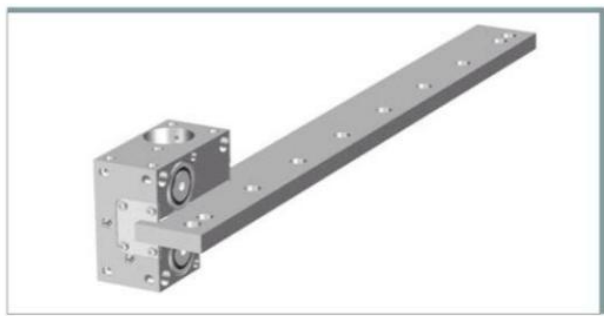
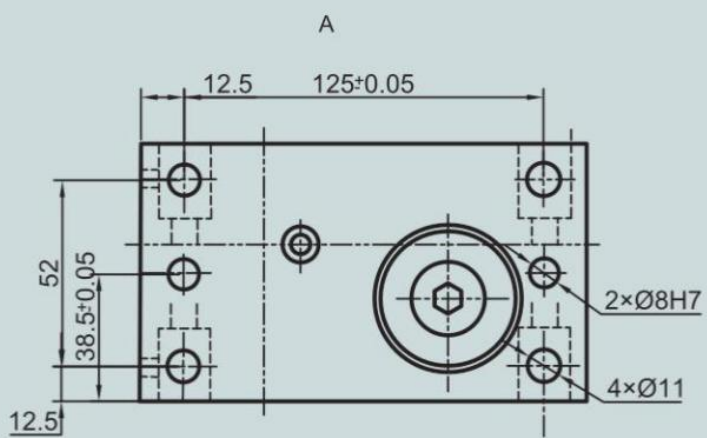


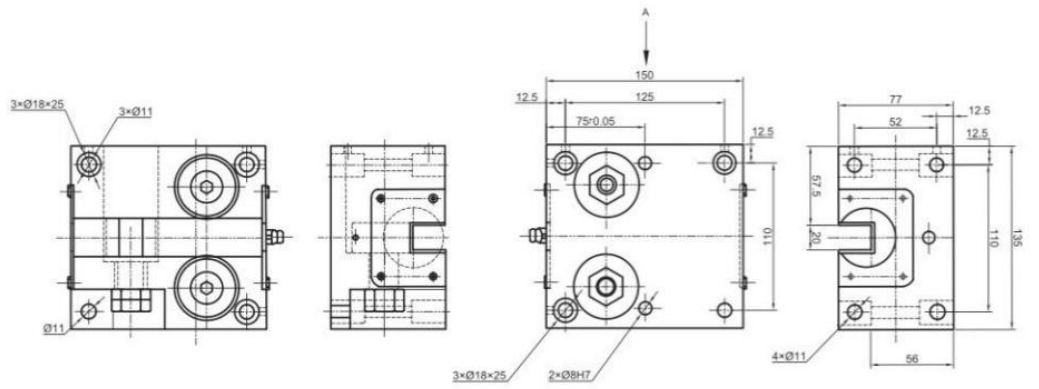
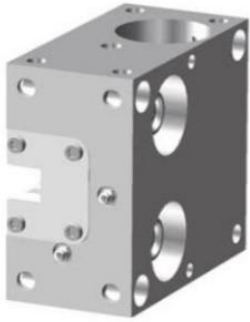
图1 Fig.1

图2 Fig.2



52型滚轮支座 (左侧支座)
Roller support (left hand version)

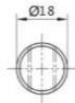
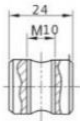
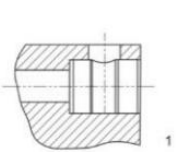




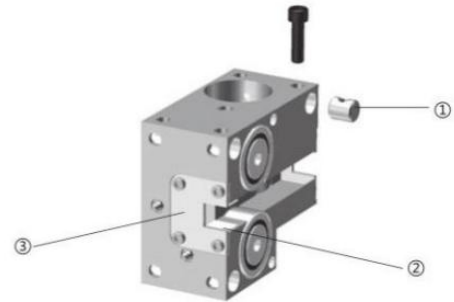
型号 Code	①	②	③	重量 M (kg)	C_{0W} (N)	$C_W^{①}$ (N)	$C_W^{②}$ (N)	N_{max} (min^{-1})
VGL52.1L	GBR	GBR	GBR	4	28000	14000	3500	3800
VGL52.2L	GBR	GBR	GBR	4	28000	14000	3500	3800
VGL52.3L	GBR	GBR	GBR	4	28000	14000	3500	3800

$CW^{①}$: Normal service life 10^6m $CW^{②}$: Normal service life 10^8m

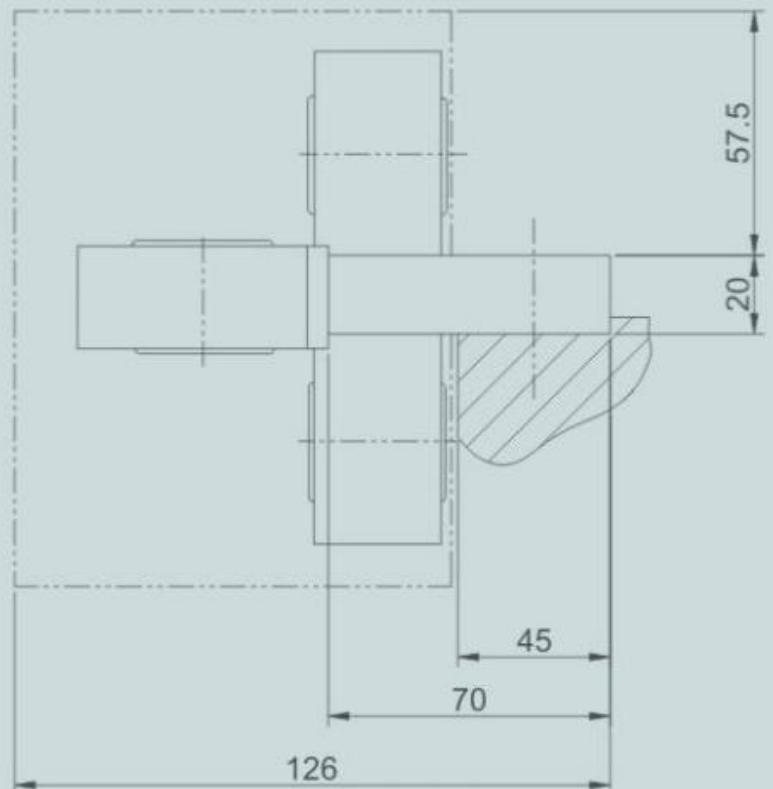
Accessories

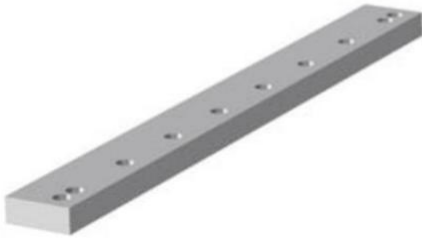


圆 Fig	材料 Material	重量 Weight (kg)
①	C45	0.01
②	毛毡	
③	Q345B	

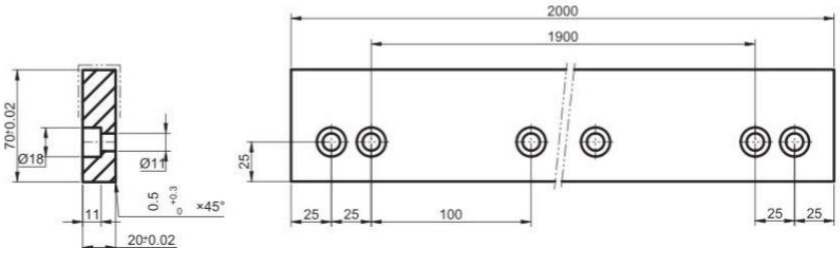


52 guideway flat rail mounting dimensions

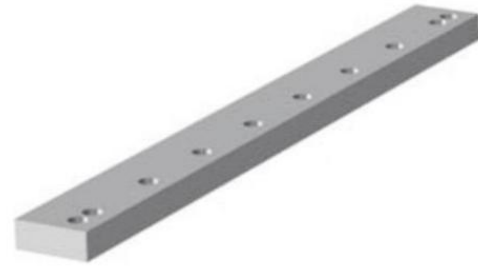
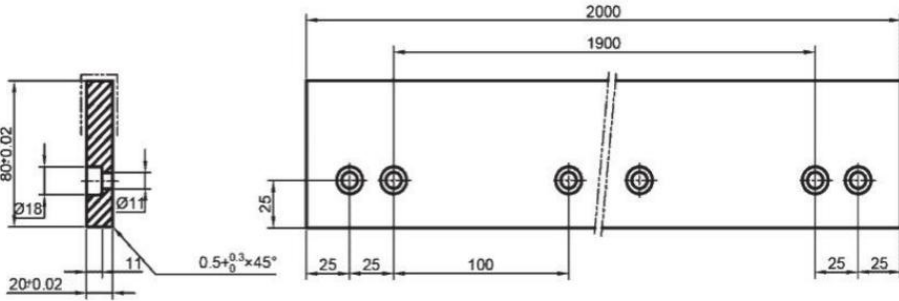




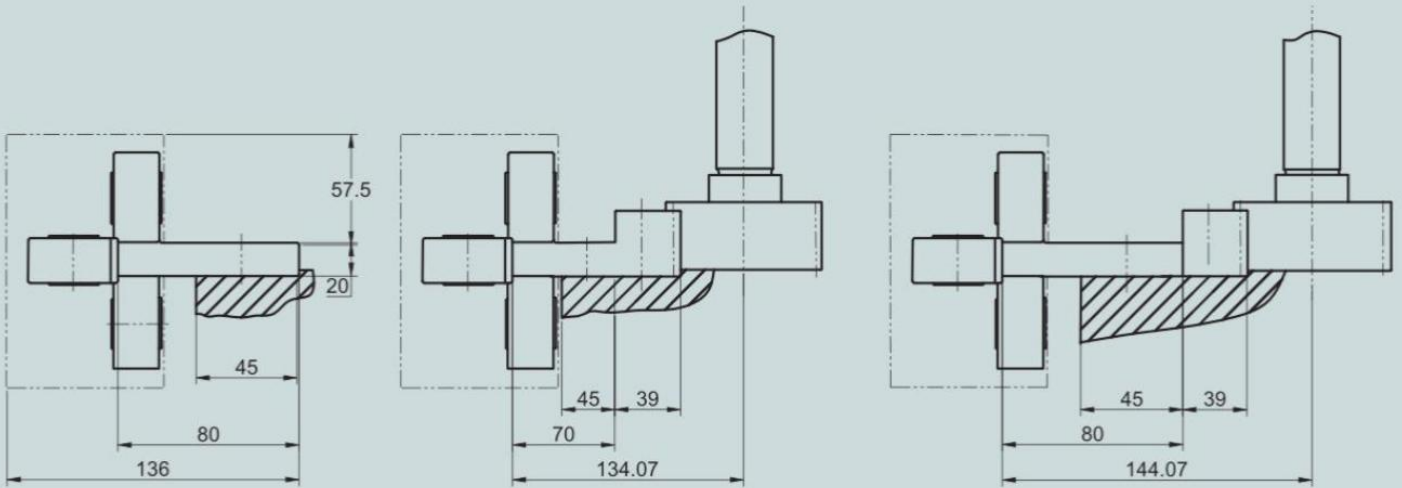
型号 Code	L	L1	材料 Material	螺栓型号 Bolt size
VGD52101	2000	1900	SCM440	M10×25 8.8 級



型号 Code	L	L1	材料 Material	螺栓型号 Bolt size
VGD52202	2000	1900	SCM440	M10×25 8.8 級

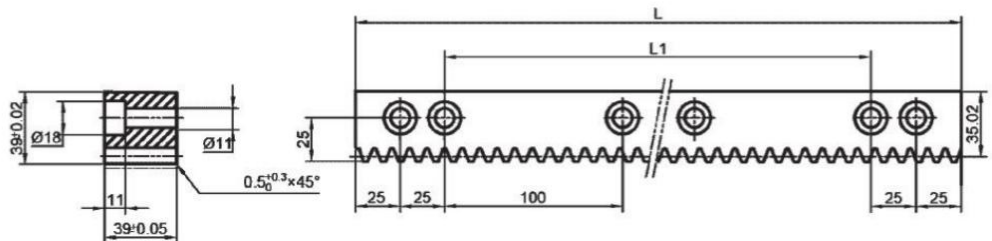


52 guideway flat rail, rack, pinon mounting dimensions



Rack

型号 Code	L	L1	模数 Module	齿距 P (mm)	材料 Material	精度等级 Precision grade	螺栓型号 Bolt size
VGE52129	1200	1100	3.9789	12.5	SCM440	DIN9	M10×40 8.8 级
VGE52209	2000	1900	3.9789	12.5	SCM440	DIN9	M10×40 8.8 级



型号 Code	齿数 Z	模数 Module	齿距 P	圆 Fig.	精度等级 Precision grade	重量 Weight KG
CLGR52-PE10	14	3.9789	12.5	1	DIN6	5.0
CLCR52-PE10	20	3.9789	12.5	2	DIN6	1.8

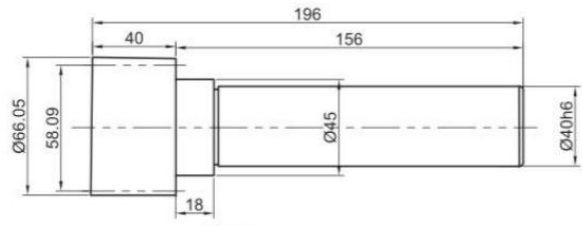


图1 Fig.1

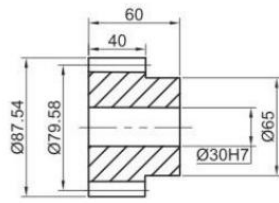


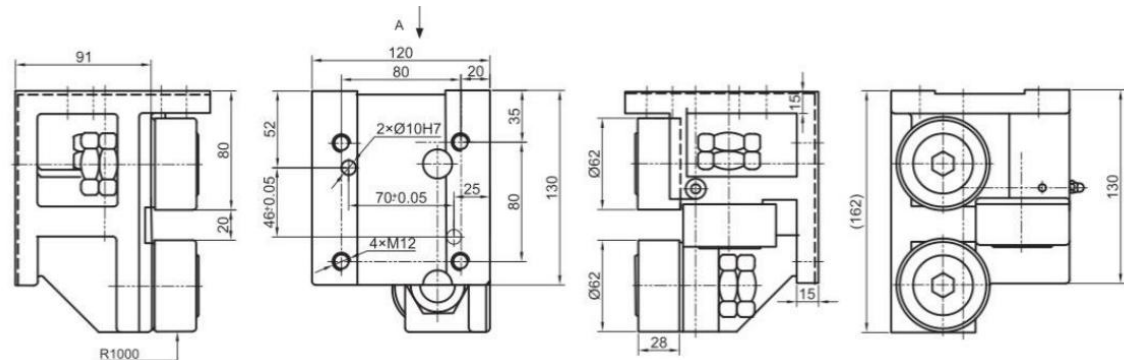
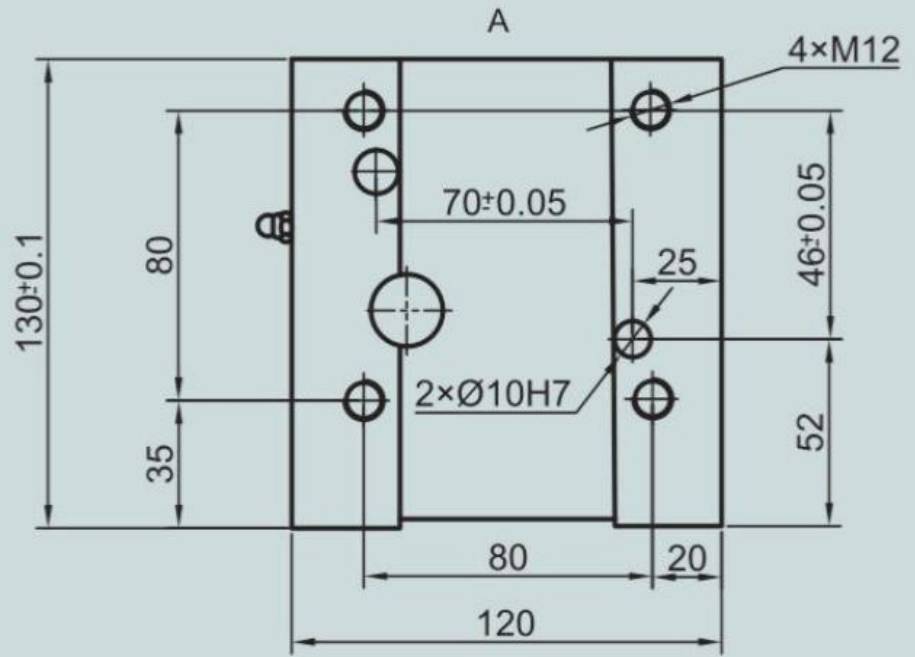
图2 Fig.2



3. 62 type roller combination:

62型滚轮支座 (右侧支座)

Roller support (right hand version)

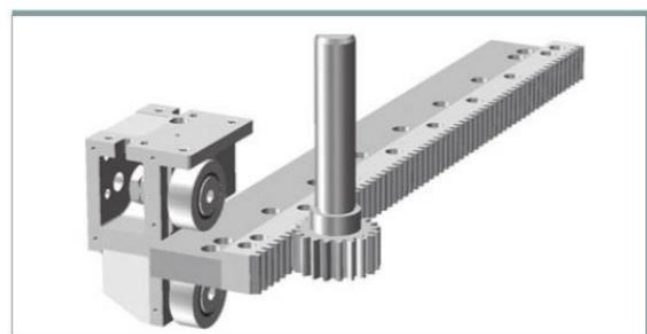
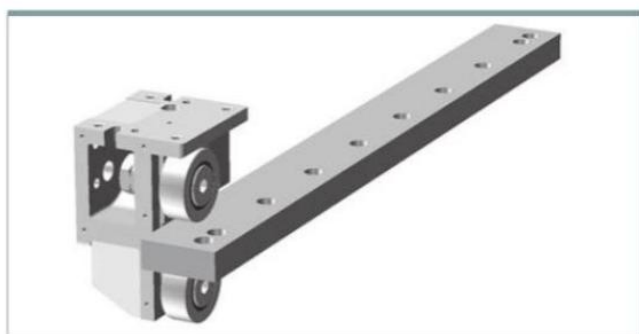
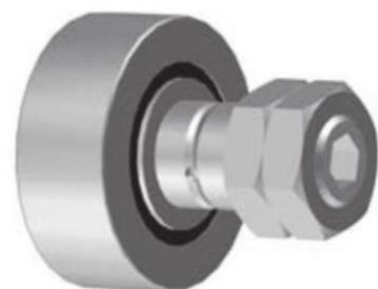
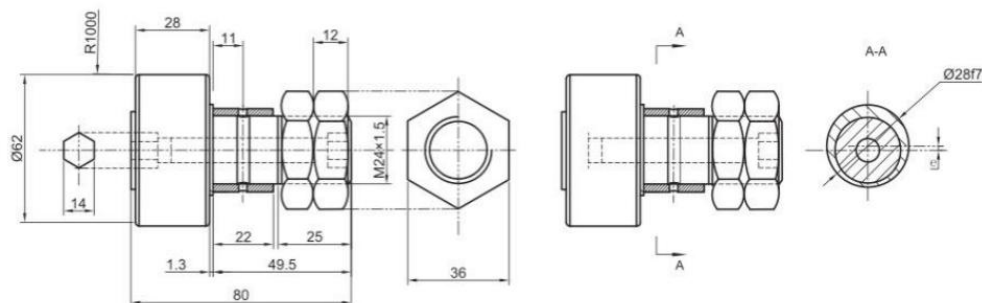


型号 Code	①	②	③	重量 M (kg)	C_{0W} (N)	$C_W^{①}$ (N)	$C_W^{②}$ (N)	N_{max} (min^{-1})
VGL62.1R	GBR	GBR	GBR	7	39500	21400	5400	2200
VGL62.2R	GBR	GBR	GBR	7	39500	21400	5400	2200
VGL62.3R	GBR	GBR	GBR	7	39500	21400	5400	2200

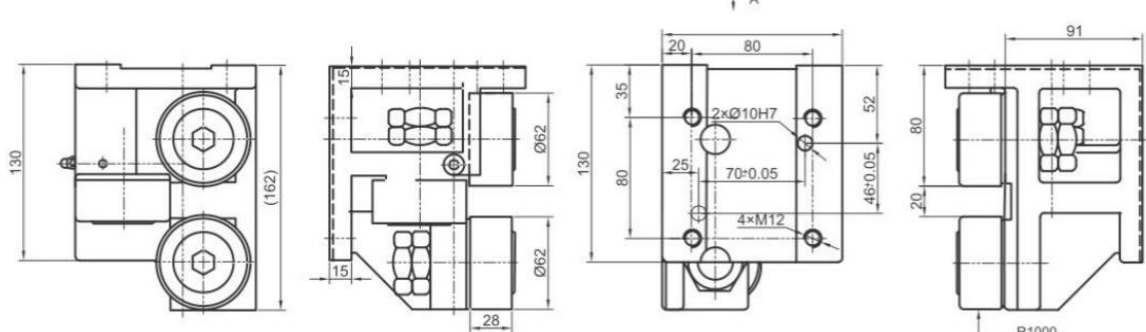
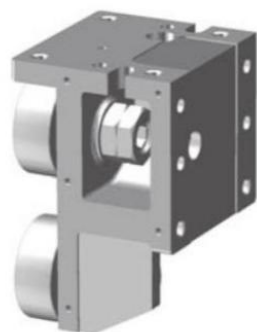
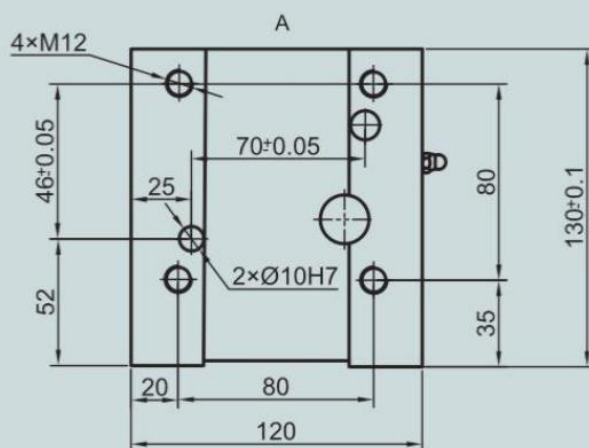
$CW^{①}$: Normal service life 10^6m

$CW^{②}$: Normal service life 10^8m

型号 Code	圆 Fig	偏心量 Excenter (mm)	重量 Weight (kg)	螺母拧紧力矩 MA (Nm)
SVL62	1	-	0.82	220
SVL62	2	1	0.82	220

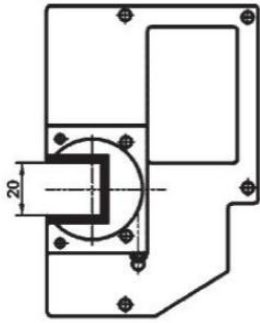


62型滚轮支座（左侧支座）
Roller support (left hand version)



型号 Code	①	②	③	重量 M (kg)	C _{0w} (N)	C _w ^① (N)	C _w ^② (N)	N _{max} (min ⁻¹)
VGL62.1L	GBR	GBR	GBR	7	39500	21400	5400	2200
VGL62.2L	GBR	GBR	GBR	7	39500	21400	5400	2200
VGL62.3L	GBR	GBR	GBR	7	39500	21400	5400	2200

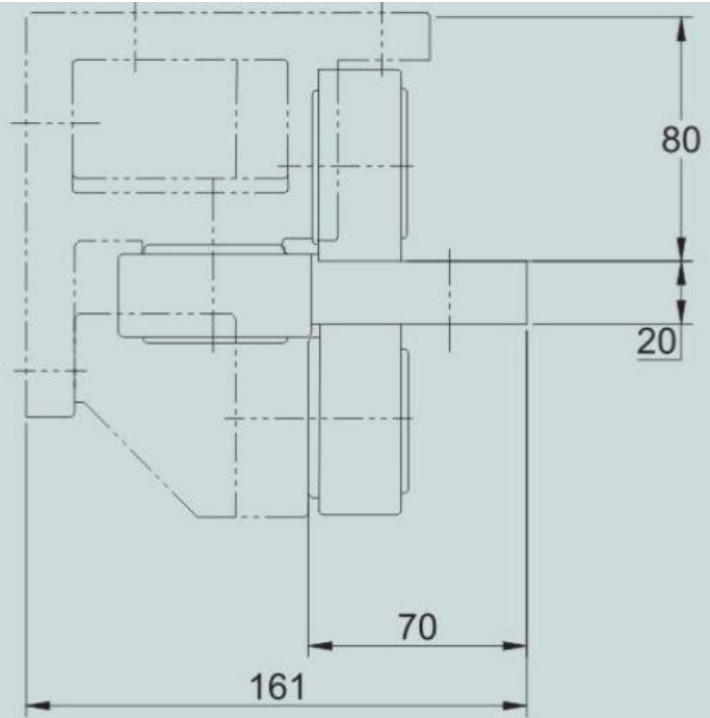
CW^① : Normal service life 10⁶m CW^② : Normal service life 10⁸m



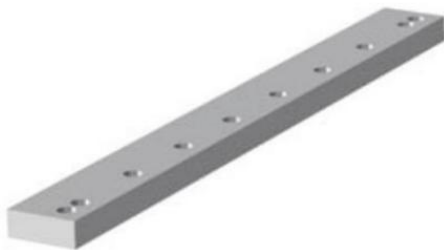
型号 Code	重量 Weight (kg)
VG62R	0.3
VG62L	0.3



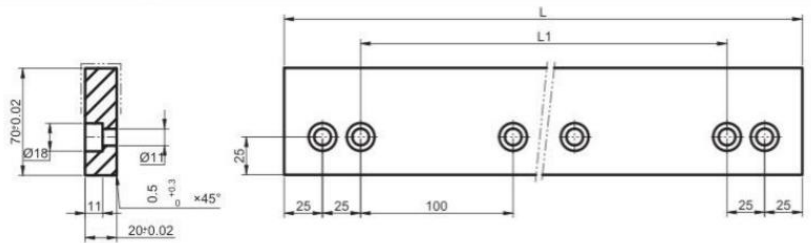
62 guideway flat rail mounting dimensions



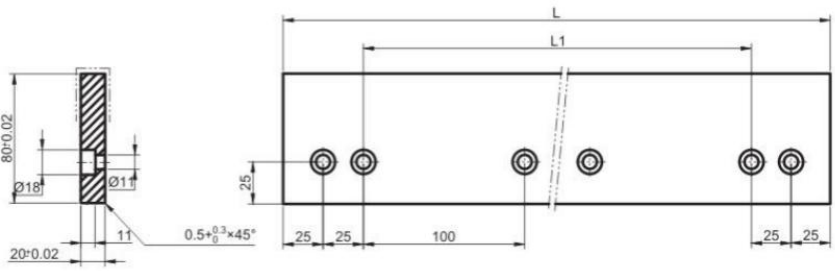
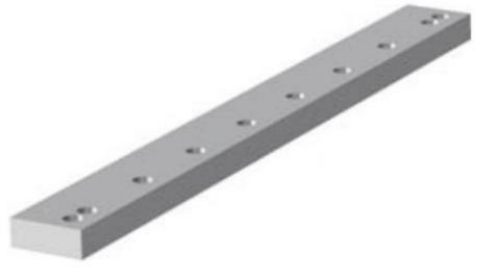
62 Guideway flat rail



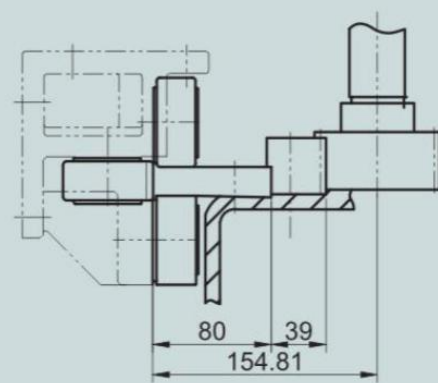
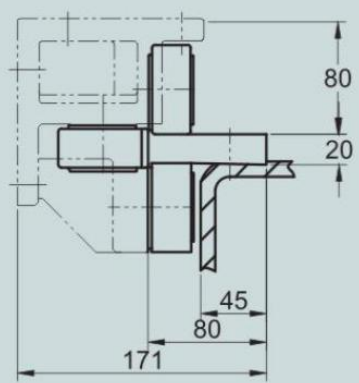
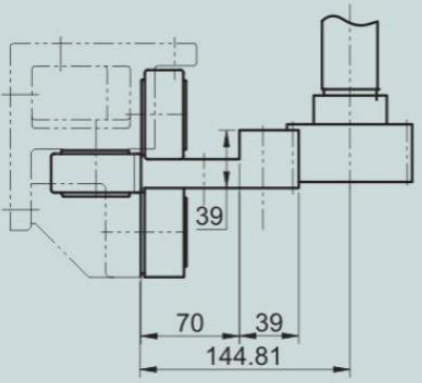
型号 Code	L	L1	材料 Material	螺栓型号 Bolt size
VGD62101	800	700	SCM440	M10×25 8.8 級
VGD62121	1200	1100	SCM440	M10×25 8.8 級
VGD62201	2000	1900	SCM440	M10×25 8.8 級



型号 Code	L	L1	材料 Material	螺栓型号 Bolt size
VGD62102	800	700	SCM440	M10×25 8.8 级
VGD62122	1200	1100	SCM440	M10×25 8.8 级
VGD62202	2000	1900	SCM440	M10×25 8.8 级

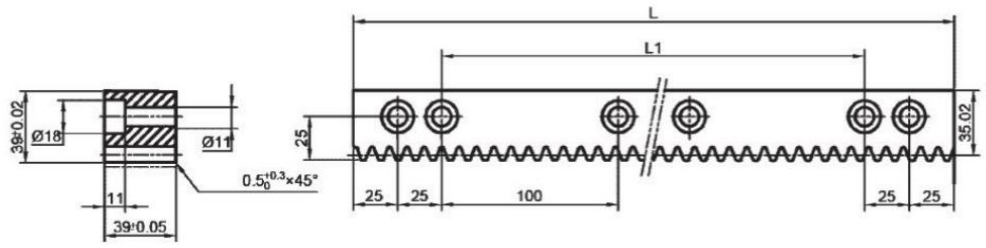


62 guideway flat rail, rack, pinion mounting dimensions



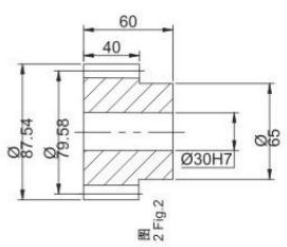
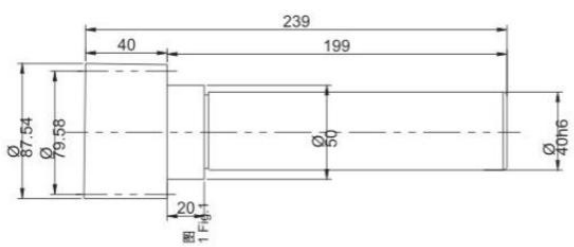
Rack

型号 Code	L	L1	模数 Module	齿距 P (mm)	材料 Material	精度等级 Precision grade	螺栓型号 Bolt size
VGE62129	1200	1100	3.9789	12.5	SCM440	DIN9	M10×45 8.8 级
VGE62209	2000	1900	3.9789	12.5	SCM440	DIN9	M10×45 8.8 级



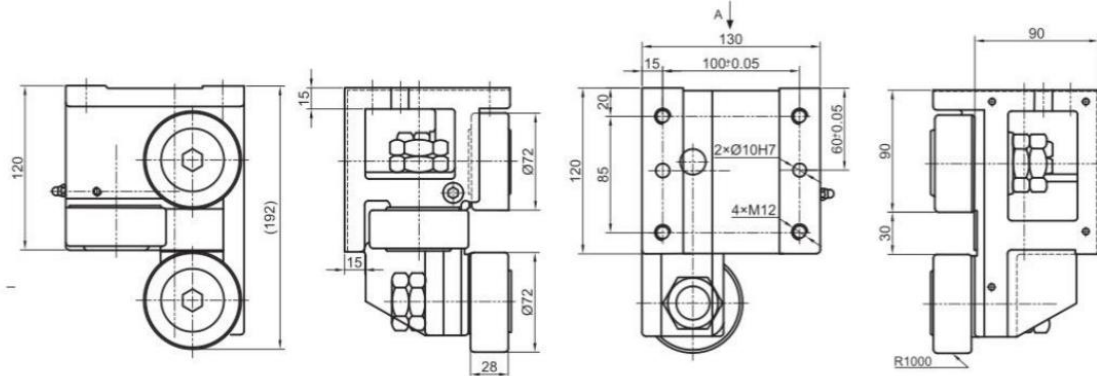
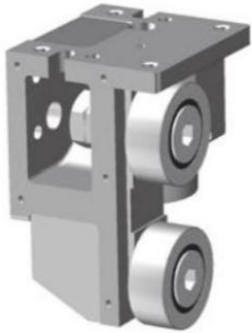
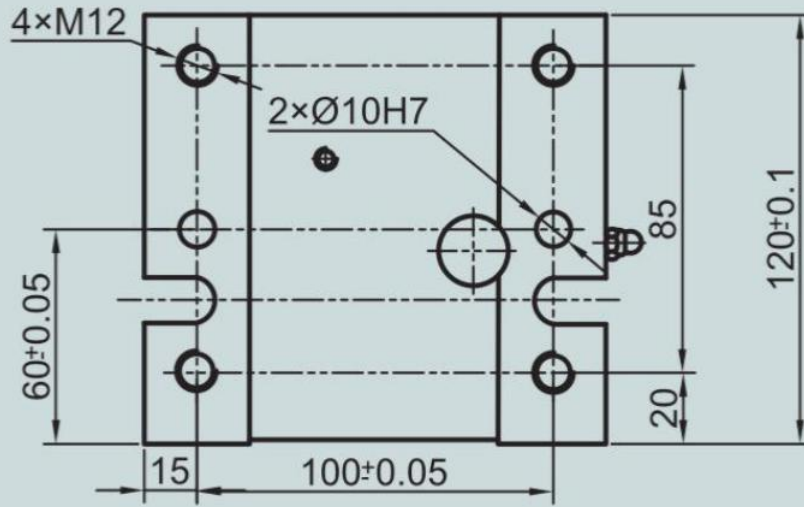
Drive pinion

型号 Code	齿数 Z	模数 Module	齿距 P	圆 Fig.	精度等级 Precision grade	重量 Weight KG
CLGR62-PE10	20	3.9789	12.5	1	DIN6	6.0
CLCR62-PE10	20	12.5	2	DIN6	1.8	



4. 72 type roller combination:

Roller support (right hand version)



型号 Code	①	②	③	重量 M (kg)	C _{0W} (N)	C _W ^① (N)	C _W ^② (N)	N _{max} (min ⁻¹)
VGL72.1R	GBR	GBR	GBR	9	46500	24600	6200	2200
VGL72.2R	GBR	GBR	GBR	9	46500	24600	6200	2200
VGL72.3R	GBR	GBR	GBR	9	46500	24600	6200	2200

CW^① : Normal service life 10⁶m CW^② : Normal service life 10⁸m

Stud roller

型号 Code	圖 Fig	偏心率 Excenter (mm)	重量 Weight (kg)	螺母拧紧力距 MA (Nm)
SVL72	1	-	1.05	220
SVL72	2	1	1.05	220

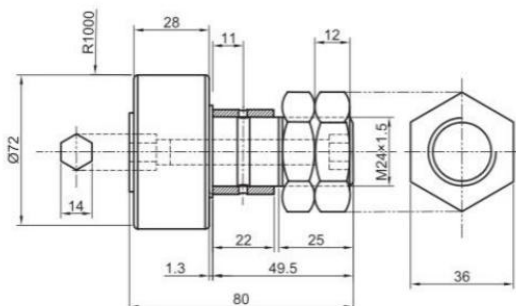


图1 Fig.1

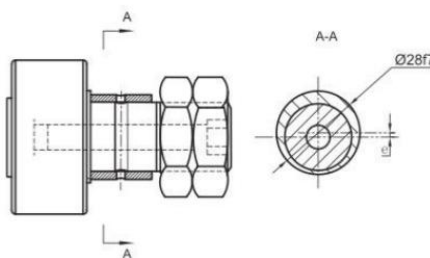
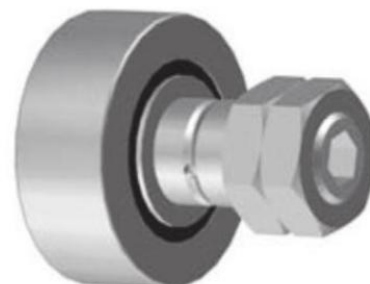
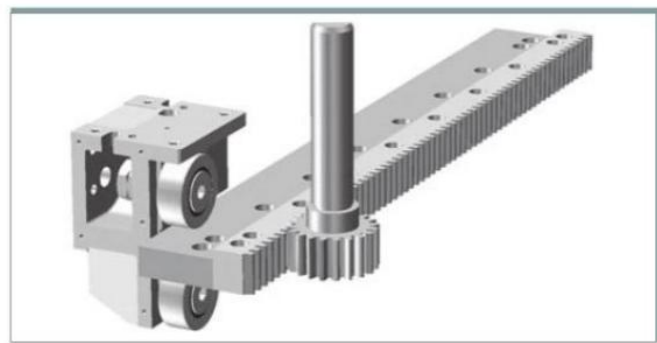
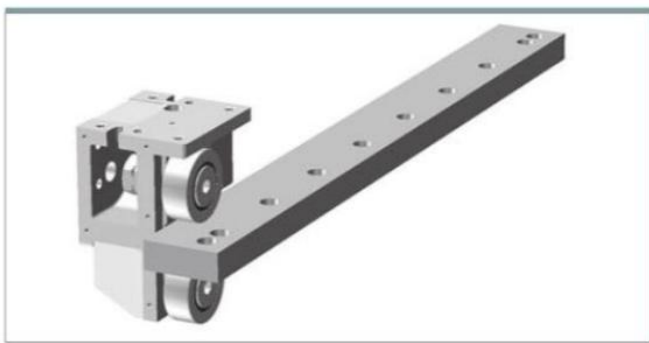
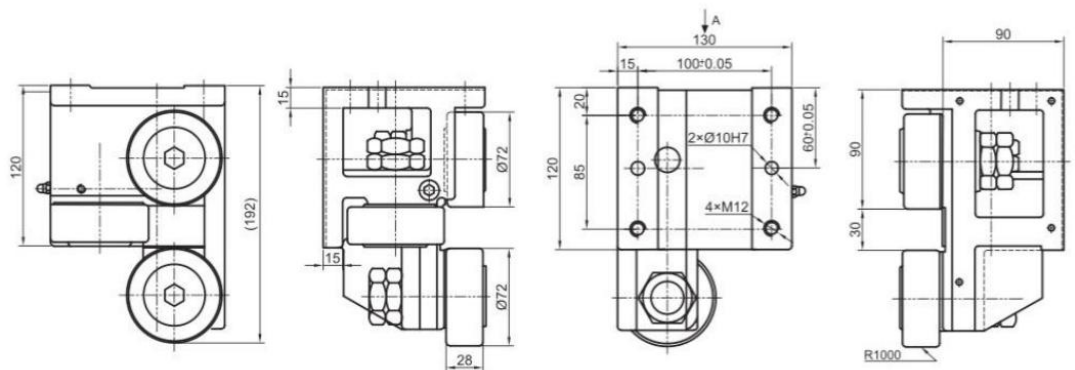
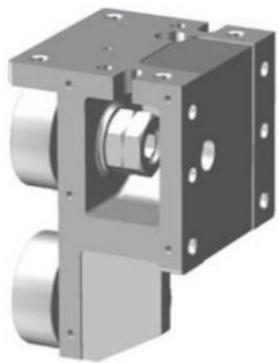
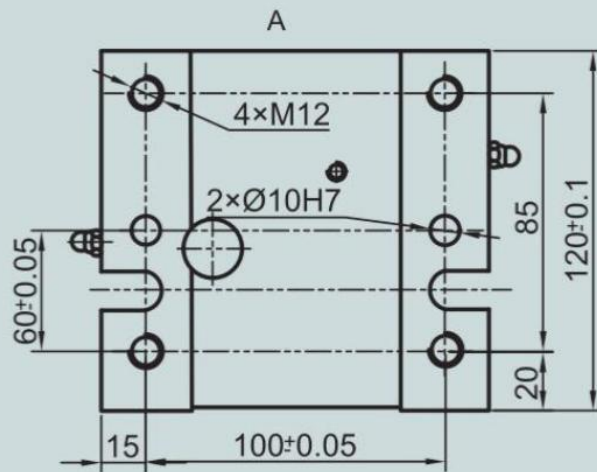


图2 Fig.2





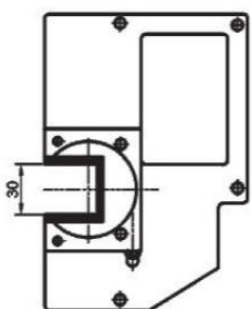
72型滚轮支座 (左侧支座)
Roller support (left hand version)



型号 Code	①	②	③	重量 M (kg)	C_{ow} (N)	$C_w^{①}$ (N)	$C_w^{②}$ (N)	N_{max} (min^{-1})
VGL72.1L	GBR	GBR	GBR	9	46500	24600	6200	2200
VGL72.2L	GBR	GBR	GBR	9	46500	24600	6200	2200
VGL72.3L	GBR	GBR	GBR	9	46500	24600	6200	2200

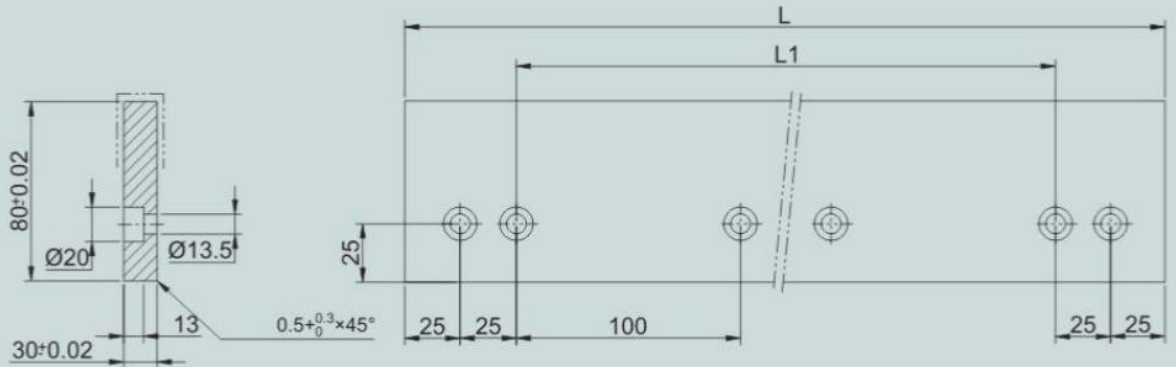
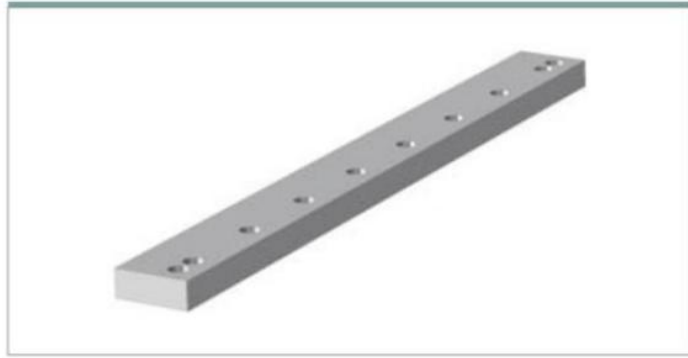
$CW^{①}$: Normal service life 10^6m $CW^{②}$: Normal service life 10^8m

Accessories

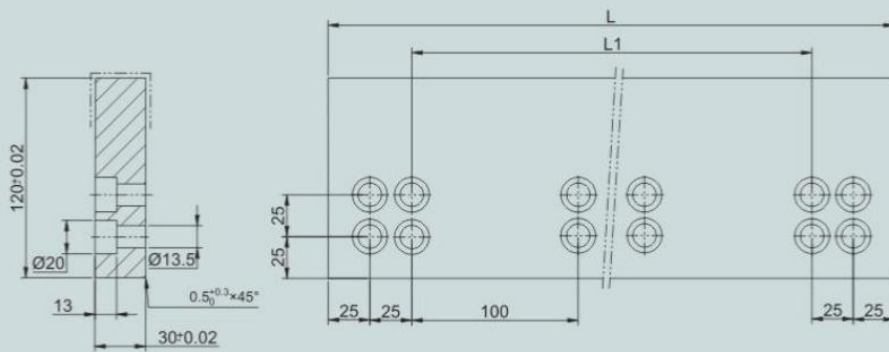


型号 Code	重量 Weight (kg)
VG72R	0.3
VG72L	0.3

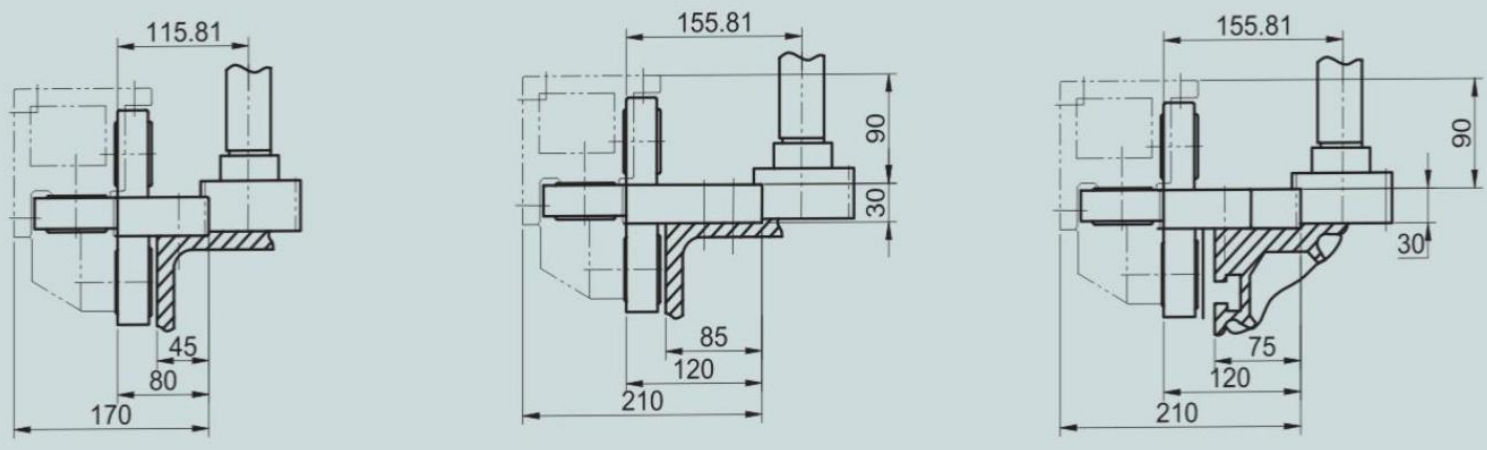




型号 Code	L	L1	材料 Material	螺栓型号 Bolt size
VGD72101	800	700	SCM440	M12×35 8.8 級
VGD72121	1200	1100	SCM440	M12×35 8.8 級
VGD72201	2000	1900	SCM440	M12×35 8.8 級



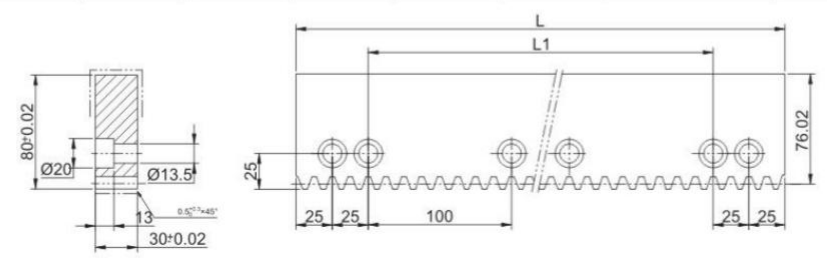
型号 Code	L	L1	材料 Material	螺栓型号 Bolt size
VGD72102	800	700	SCM440	M12×35 8.8 級
VGD72122	1200	1100	SCM440	M12×35 8.8 級
VGD72202	2000	1900	SCM440	M12×35 8.8 級



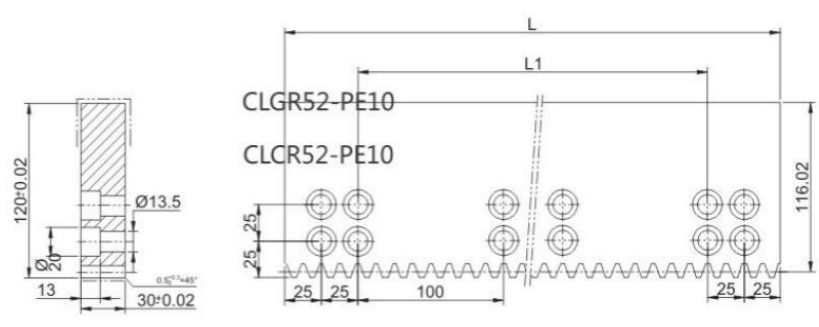
Guideway flat rail rack

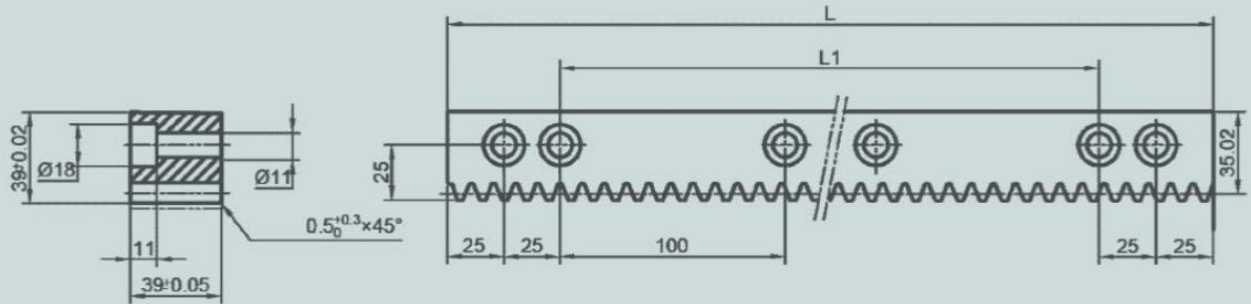
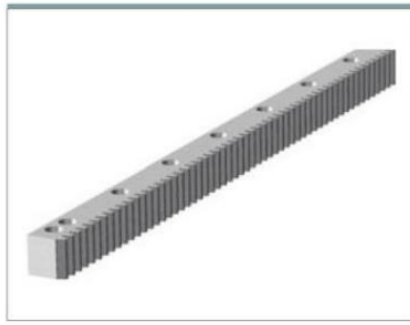


型号 Code	L	L1	模数 Module	齿距 P (mm)	材料 Material	精度等级 Precision grade	螺栓型号 Bolt size
VGE720613	800	700	3.9789	12.5	SCM440	DIN9	M12×35 8.8 级
VGE720813	1200	1100	3.9789	12.5	SCM440	DIN9	M12×35 8.8 级
VGE721213	2000	1900	3.9789	12.5	SCM440	DIN9	M12×35 8.8 级



型号 Code	L	L1	模数 Module	齿距 P (mm)	材料 Material	精度等级 Precision grade	螺栓型号 Bolt size
VGE720614	800	700	3.9789	12.5	SCM440	DIN9	M12×35 8.8 级
VGE720814	1200	1100	3.9789	12.5	SCM440	DIN9	M12×35 8.8 级
VGE721214	2000	1900	3.9789	12.5	SCM440	DIN9	M12×35 8.8 级





型号 Code	L	L1	模数 Module	齿距 P (mm)	材料 Material	精度等级 Precision grade	螺栓型号 Bolt size
VGS72129	1200	1100	3.9789	12.5	SCM440	DIN9	M10×45 8.8 级
VGS72209	2000	1900	3.9789	12.5	SCM440	DIN9	M10×45 8.8 级

齿轮

Drive pinion

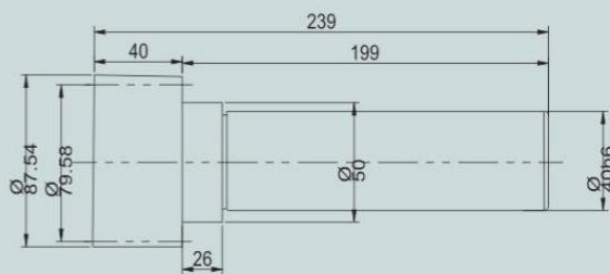


图1 Fig.1

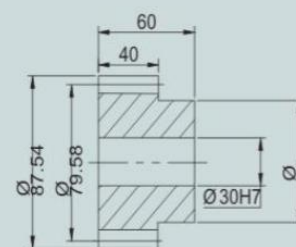
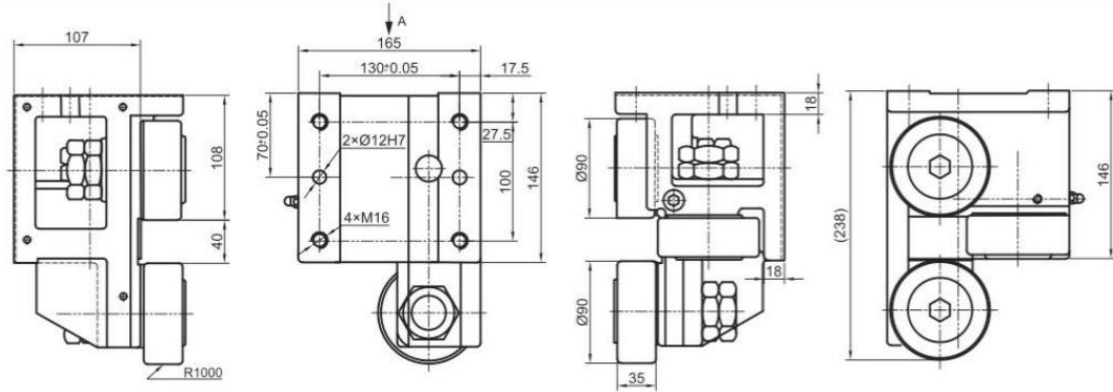
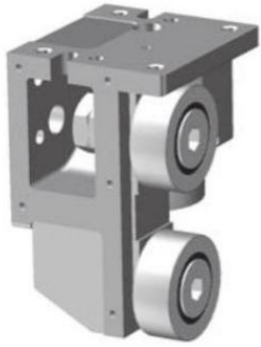
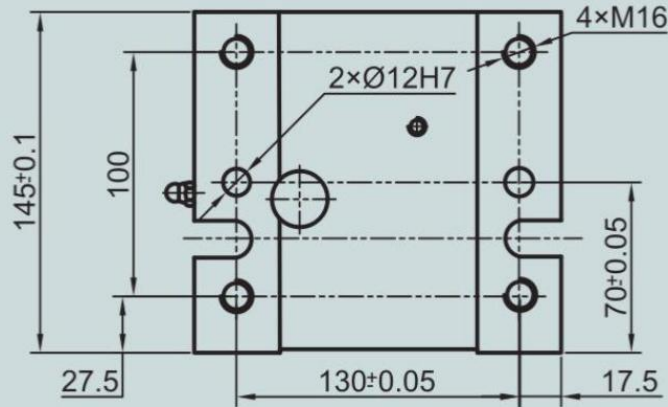


图2 Fig.2

型号 Code	齿数 Z	模数 Module	齿距 P	圆 Fig.	精度等级 Precision grade	重量 Weight KG
CLGR72-PE10	20	3.9789	12.5	1	DIN6	6.0
CLCR72-PE10	20	3.9789	12.5	2	DIN6	1.8

5. 90 type roller combination:

Roller support (right hand version)



型号 Code	①	②	③	重量 M (kg)	C_{0w} (N)	$C_w^{①}$ (N)	$C_w^{②}$ (N)	N_{max} (min^{-1})
VGL90.1R	GBR	GBR	GBR	15	82000	43100	10800	1800
VGL90.2R	GBR	GBR	GBR	15	82000	43100	10800	1800
VGL90.3R	GBR	GBR	GBR	15	82000	43100	10800	1800

$C_w^{①}$: Normal service life 10^6m $C_w^{②}$: Normal service life 10^8m

Stud roller

型号 Code	圆 Fig	偏心量 Excenter (mm)	重量 Weight (kg)	螺母拧紧力矩 MA (Nm)
SVL90	1	-	2.02	450
SVL90	2	1	2.02	450

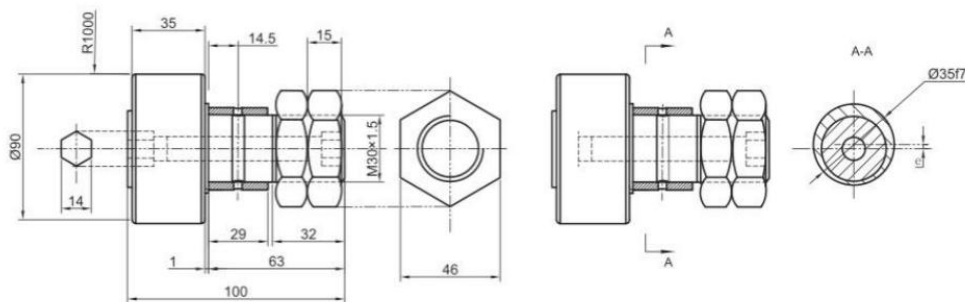
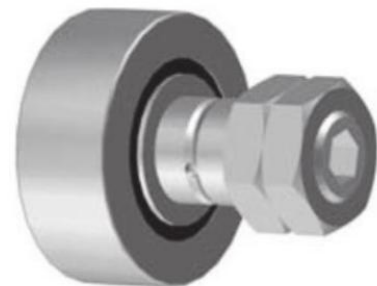
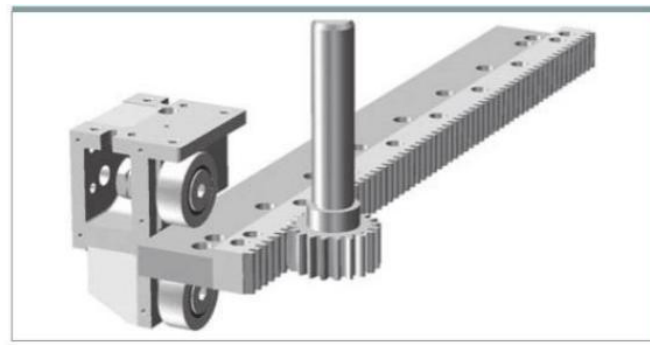
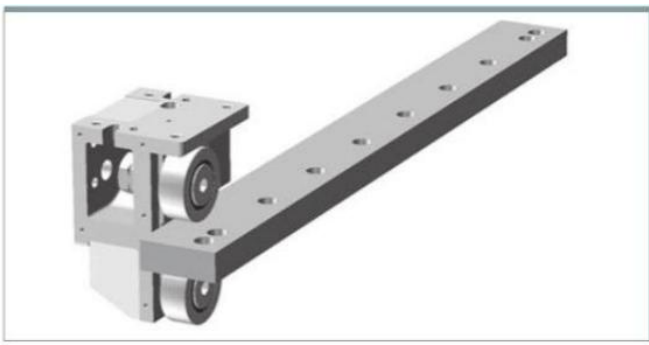


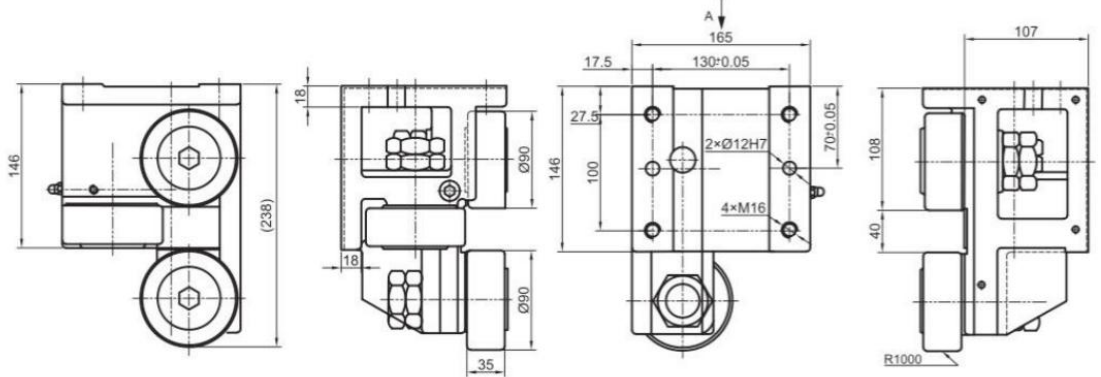
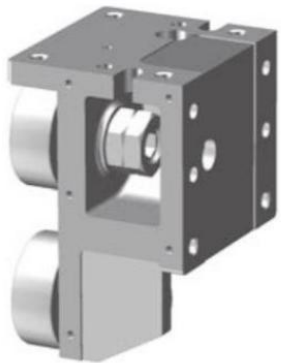
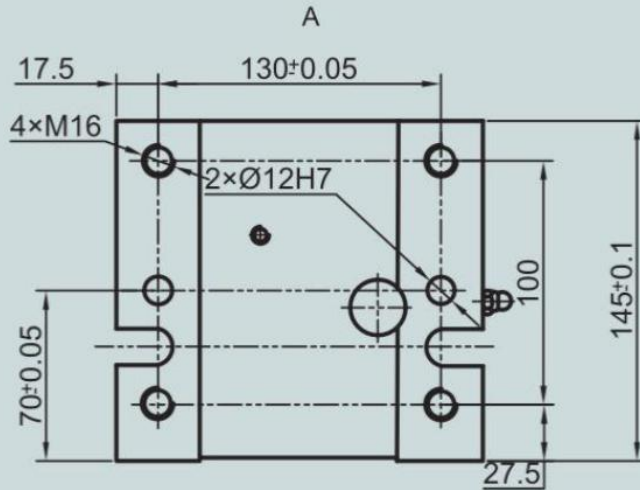
图1 Fig.1

图2 Fig.2





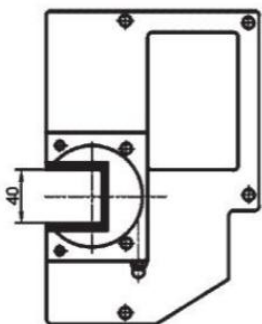
90型滚轮支座 (左侧支座)
Roller support (left hand version)



型号 Code	①	②	③	重量 M (kg)	C_{0W} (N)	$C_w^{①}$ (N)	$C_w^{②}$ (N)	N_{max} (min ⁻¹)
VGL90.1L	GBR	GBR	GBR	15	82000	43100	10800	1800
VGL90.2L	GBR	GBR	GBR	15	82000	43100	10800	1800
VGL90.3L	GBR	GBR	GBR	15	82000	43100	10800	1800

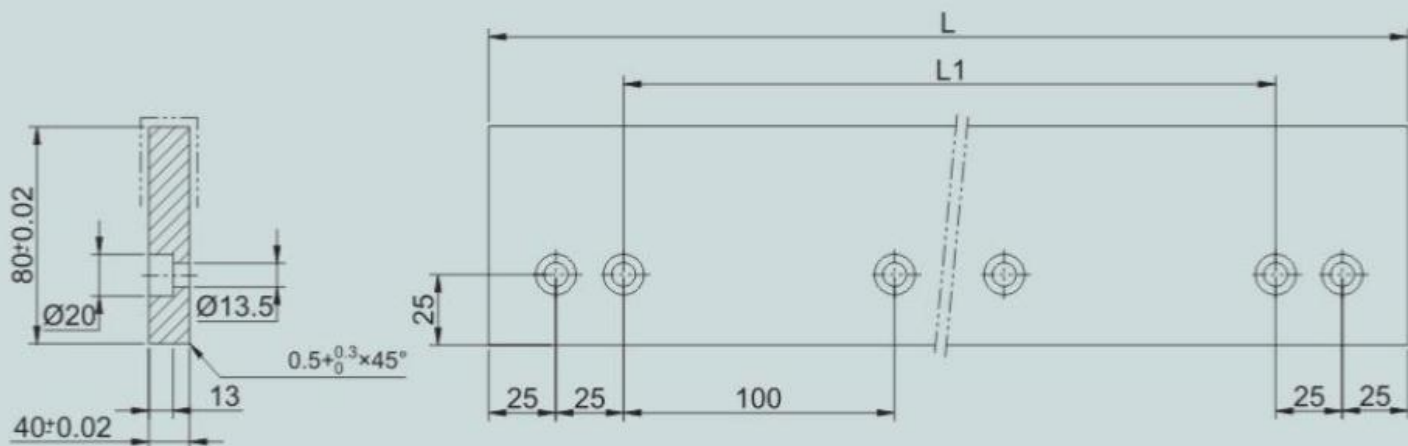
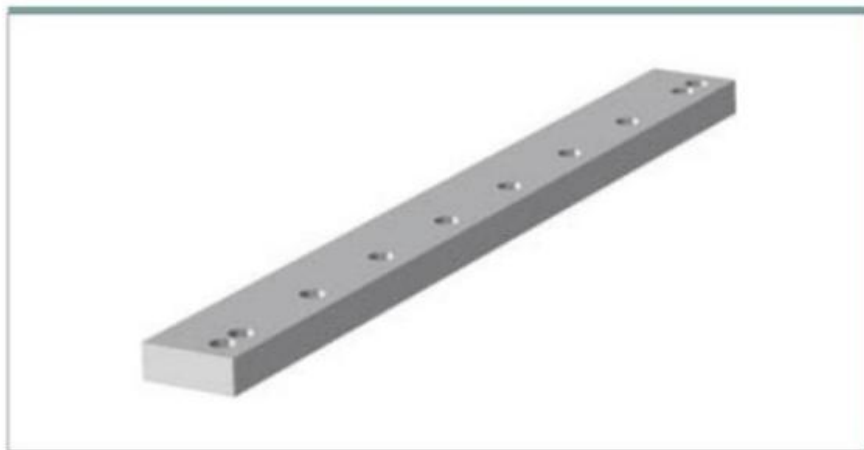
$CW^{①}$: Normal service life 10^6m $CW^{②}$: Normal service life 10^8m

Accessories

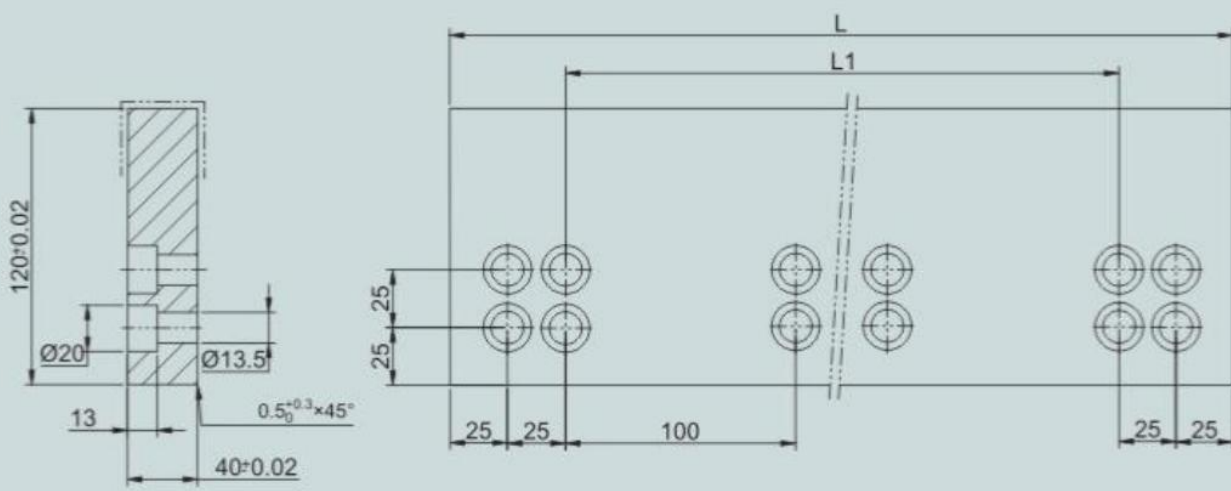
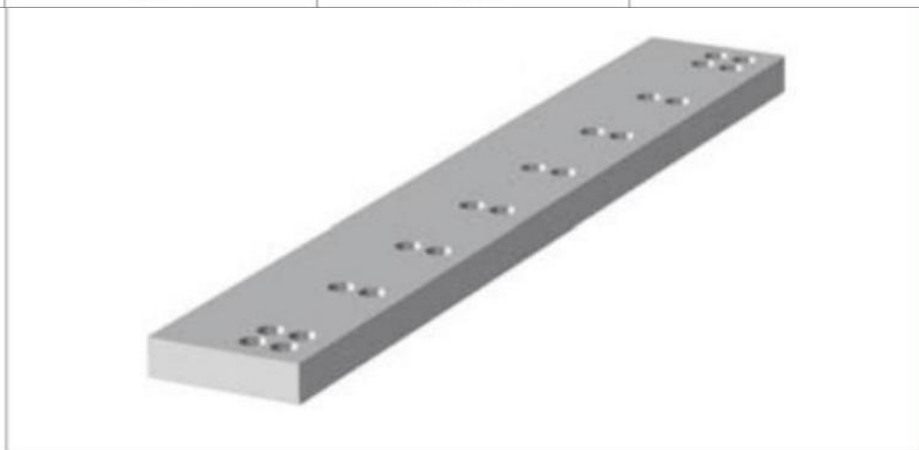


型号 Code	重量 Weight (kg)
VG90R	0.4
VG90L	0.4



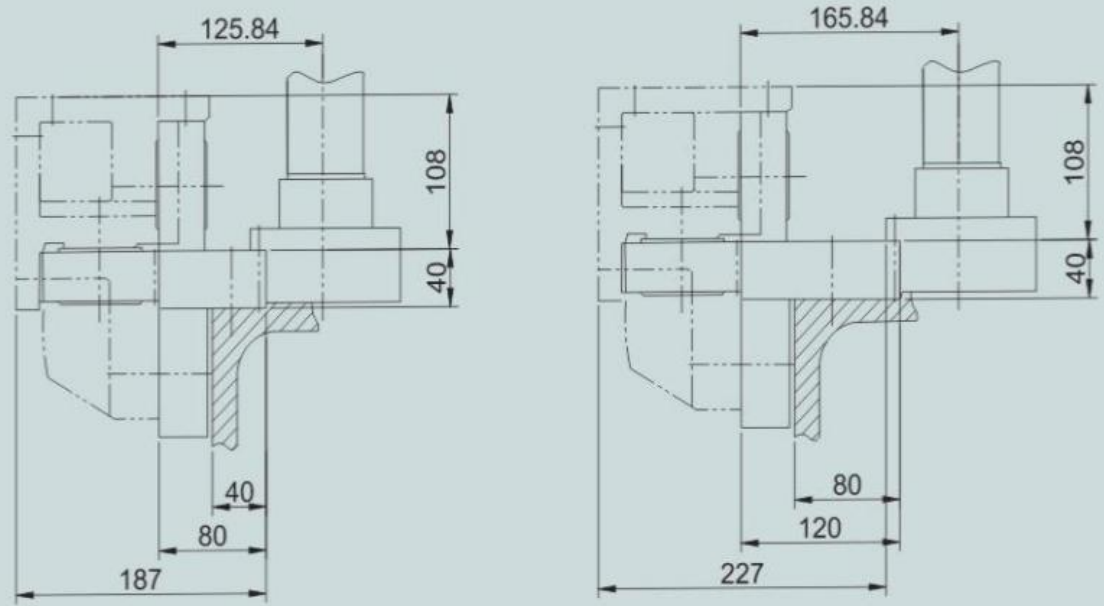


型号 Code	L	L1	材料 Material	螺栓型号 Bolt size
VG90101	800	700	SCM440	M12×45 8.8 級
VG90121	1200	1100	SCM440	M12×45 8.8 級
VG90201	2000	1900	SCM440	M12×45 8.8 級



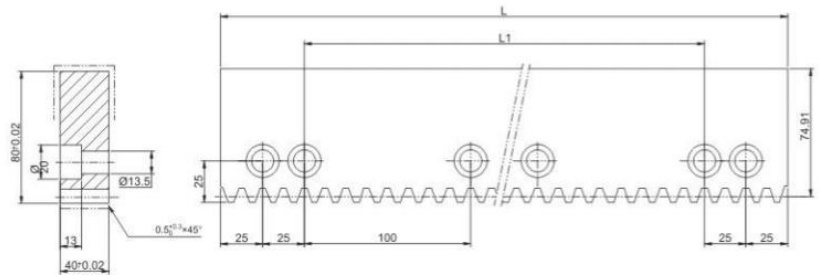
型号 Code	L	L1	材料 Material	螺栓型号 Bolt size
VGD90102	800	700	SCM440	M12×45 8.8 級
VGD90122	1200	1100	SCM440	M12×45 8.8 級
VGD90202	2000	1900	SCM440	M12×45 8.8 級

90 guideway flat rail,rack,pinon mounting dimensions

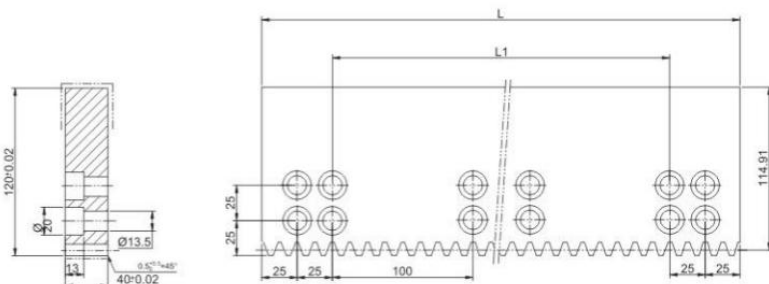


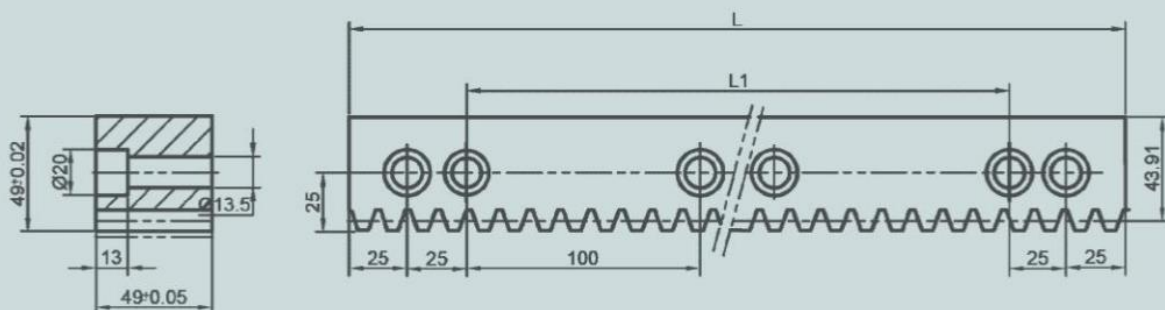
Guideway flat rail rack

型号 Code	L	L1	模数 Module	齿距 P (mm)	材料 Material	精度等级 Precision grade	螺栓型号 Bolt size
VGE900613	800	700	5.0930	16.0	SCM440	DIN9	M12×45 8.8 级
VGE900813	1200	1100	5.0930	16.0	SCM440	DIN9	M12×45 8.8 级
VGE901213	2000	1900	5.0930	16.0	SCM440	DIN9	M12×45 8.8 级



型号 Code	L	L1	模数 Module	齿距 P (mm)	材料 Material	精度等级 Precision grade	螺栓型号 Bolt size
VGE900614	800	700	5.0930	16.0	SCM440	DIN9	M12×45 8.8 级
VGE900814	1200	1100	5.0930	16.0	SCM440	DIN9	M12×45 8.8 级
VGE901214	2000	1900	5.0930	16.0	SCM440	DIN9	M12×45 8.8 级





型号 Code	L	L1	模数 Module	齿距 P (mm)	材料 Material	精度等级 Precision grade	螺栓型号 Bolt size
VGS90129	1200	1100	5.093	16.0	SCM440	DIN9	M12×45 8.8 级
VGS90209	2000	1900	5.093	16.0	SCM440	DIN9	M12×45 8.8 级

Drive pinion

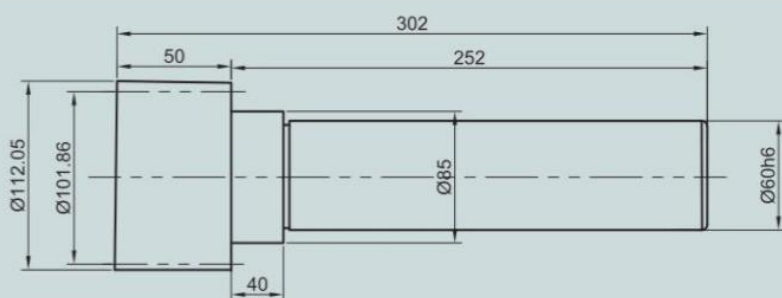


图1 Fig.1

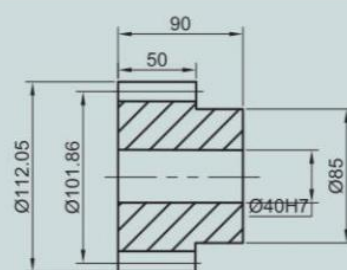


图2 Fig.2

型号 Code	齿数 Z	模数 Module	齿距 P	圆 Fig.	精度等级 Precision grade	重量 Weight KG
CLGR90-PE10	20	5.0930	16.0	1	DIN6	9
CLCR90-PE10	20	5.0930	16.0	2	DIN6	2.5